

# Sworder's Field Wheeled Sports Area

Design Consultation  
June 2020



# Introduction

Thank you for participating in this online design consultation for a new wheeled sports area at Swarder's Field.

The following document will outline the brief and scope of the track and some initial concept plans for the facility.



## Project Background

- Bishop's Stortford Town Council, along with East Herts Council, is currently engaged in a major improvement of the facilities at Castle Park, Bishop's Stortford. Further details can be found on the website of East Herts District Council (<https://www.eastherts.gov.uk/castlepark>). A part of the project, which is supported financially by both Councils concerned and by the National Lottery, has already been commenced and construction will occur during 2020/2021.
- Alongside the element of the project, and in addition to the lottery-supported programme, Bishop's Stortford Town Council had initially intended to construct a BMX Track.
- More recently the Town Council has been advised and has accepted that a 'pure' BMX Track is not be the best use of the space available and that, instead, a Wheeled Sports Area (including BMX, Scooters, Wheelchairs, etc.) designed to appeal to users of a wide spectrum of age groups, would be preferable.
- Bishop's Stortford Town Council have appointed Velosolutions to design and build the new facility.
- As part of the design phase of the project, Velosolutions welcomes you to contribute your input and feedback to help develop the initial concept designs.







## Who are we?

We are Velosolutions, global pump track design and construction specialists. We have over 200 tracks on the ground worldwide in over 20 countries including Switzerland, South Africa, Chile, India, New Zealand and UK!

You can find more details of our work on [velosolutions.com](http://velosolutions.com) and the locations of all of our tracks on [pumptrack.com](http://pumptrack.com)





## What is a wheeled sports area?

A wheeled sports area is designed for all things on wheels. From BMX and mountain bikes to skateboards, scooters and roller skates, a wheeled sports area is a playground for all wheels. They typically cater for a wide range of abilities, with a beginner simply rolling through the undulations, but as your skills improve there are more challenges, such as jumps and transfer lines.



# Design Brief

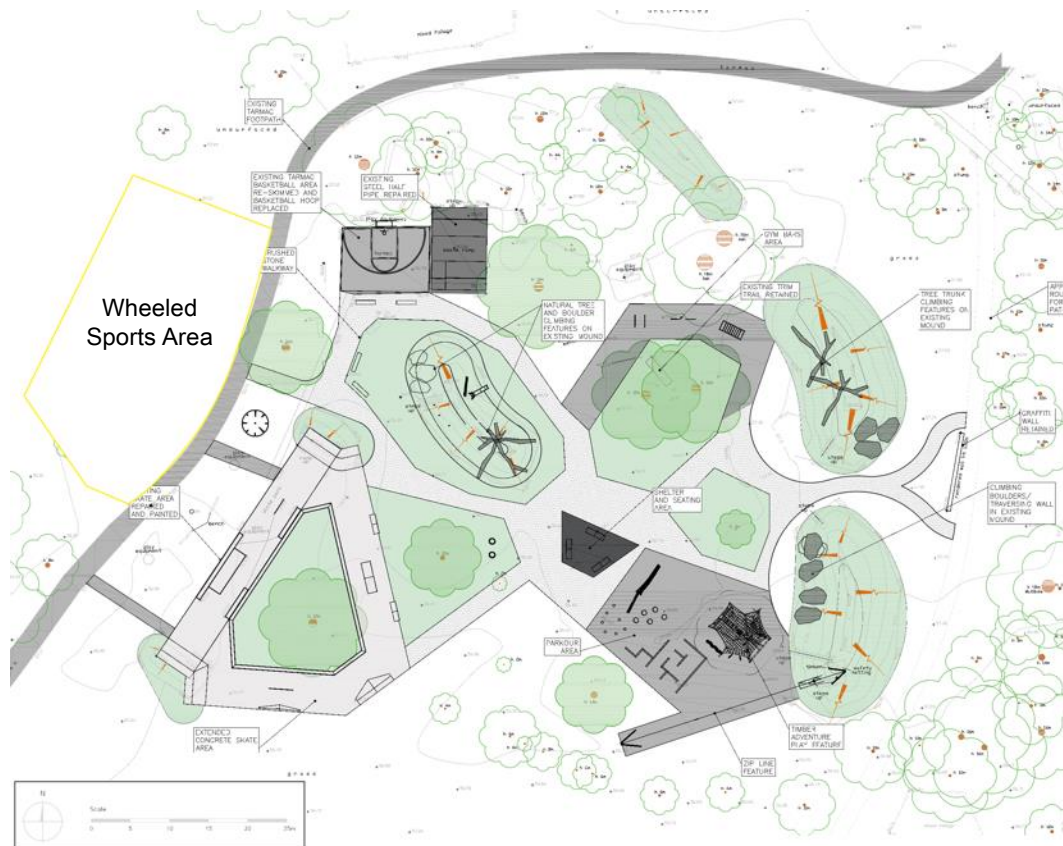
The following design brief has been provided to us by Bishop Stortford Town Council

- Design of a **wheeled sports area**, to give the most possibility for enjoyment, learning and progression of skills for all abilities and wheeled sports types.
- **Inclusive**  
Target users for the new facility are to be all wheeled sports users including:
  - Skateboards
  - BMXs
  - MTBs
  - Scooters
  - WMX wheelchair users
- The facility is to appeal to a **wide range of age groups**
- The facility must **compliment** the existing and planned future **facilities** in Swarder's Field
- **Drainage** should be incorporated to prevent ponding within the track or surrounding area.
- The design should include an **area** for groups to congregate at the facility



## Site Location

The wheeled sports area is to be located adjacent to the existing skatepark, which is to be redeveloped as part of the wider Castle Park development masterplan.





# Design Proposal

We have produced an initial concept of the type of facility we propose to develop for the project.

We would like your input on the proposed design as a **future user** or **member of the community** to provide the **best possible facility** for the space!





# Design Proposal

Our wheeled sports area design proposal includes a full asphalt pump track, as well as a bowl area in the centre of the site. These are explained in the following slides.





## What is a Pump Track?

A pump track is a series of rollers and berms (banked corners) to enable you to generate speed from using your legs (and arms if you have handlebars!) by pushing down on the features; a technique known as 'pumping'. The tracks are incredibly fun and suitable for a wide range of abilities. A beginner can simply roll/scoot around the track, but as your technique improves, your speed will increase.

*Skelf Pump Track, Edinburgh*



*Skateboarding at  
Wishaw Pump Track*



*Expert riding at  
Inverness Pump Track*





## What is a Pump Track?

A pump track is a series of rollers and berms (banked corners) to enable you to generate speed from using your legs (and arms if you have handlebars!) by pushing down on the features; a technique known as 'pumping'. The tracks are incredibly fun and suitable for a wide range of abilities. A beginner can simply roll/scoot around the track, but as your technique improves, your speed will increase.

See the **videos** below showing a skateboarder and a mountain biker using a pump track.



*Young skateboarder at Colorado Pump Track, USA*



*Expert riding at Bariloche Pump Track, Argentina*



# Proposed Features

- **Full Asphalt Surface**

- Fast rolling*
- Provides grip in wet conditions*
- Maintenance free*
- Inclusive of all wheeled sports*



- **Design to allow for progression and inclusivity**

*Suitable for beginner pump track riders through to experts for all wheeled sports.*





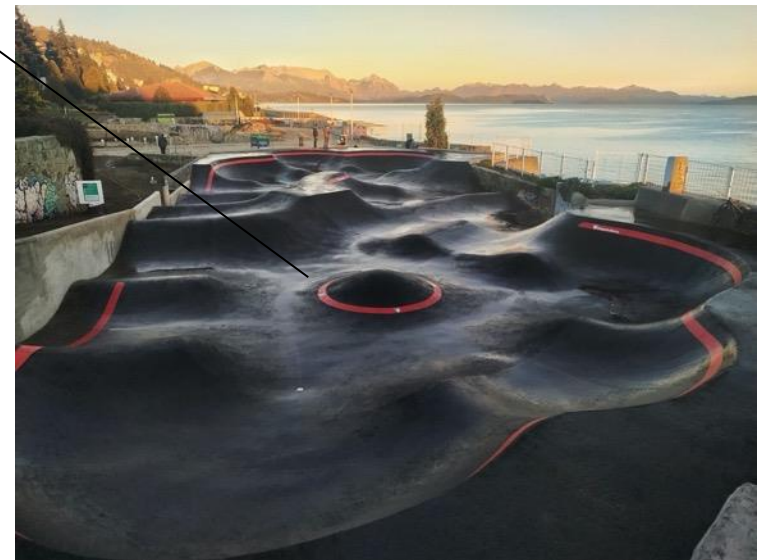
# Proposed Features



*Adjacent 180° berms*



*Multi berm*



*Pump park area*



# Additional Feature Options

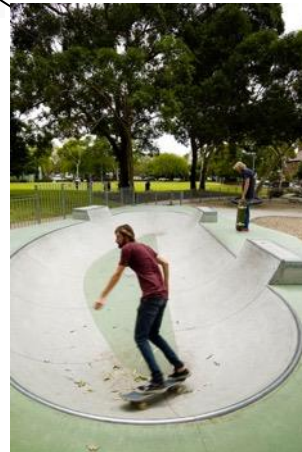
*Alongside the pump track the concept includes additional features. These could be...*



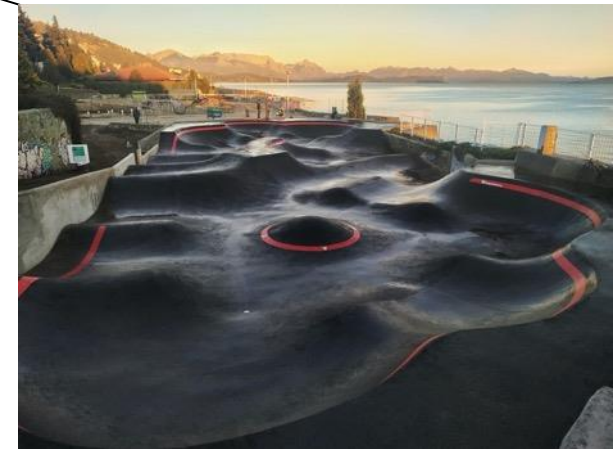
*Asphalt 'donut' bowl*



*A longer Pump Track!*



*Mini Concrete Bowl*



*Larger 'Pump park' area with playful features*





# Additional Elements

## – Safety Lines

Painted lines are to partly follow the exterior the pump park area. The lines will play with the design of the final features. Paint is to be a hard wearing, traffic line marking road paint, embedded with grip. We can provide various colour options.



*Yellow*



*Blue*



*Red*



*Green*



# Additional Elements

- **Rest Area**

*Provides a social space. To be elevated to allow for good views of the track. Allow riders to 'drop in' to the track providing initial speed to start.*



- **Boundary Knee Rail**

*To be located between existing footpath and wheeled sports area to provide safety to both users and public as well as helping to protect the landscaped areas.*





# Additional Elements

## – Signage

Information signage will be installed to provide safety information and a code of conduct.



## – Bins

2 bins are included to help keep the facility tidy. These are to be covered and be of metal construction.



# Additional Elements

- **Tree Planting**

*3 trees to be planted around the perimeter of the site.  
These are proposed to be a native species fruit tree  
such as apple trees.*



- **Turf landscaping around perimeter**

*The outer perimeter of the facility is to be landscaped  
with turf to blending the facility into its environment and  
protect the track edges.*



# Design Considerations

- **Full drainage plan**

*The track will have a subsurface drainage plan to prevent ponding on/around the track.*



- **Safety Standards**

*The track is to be designed in line with RoSPA guidelines and to BS EN 14974 Safety Standards.*





# Other Features

There are a number of types of features that we can factor into the final designs.

## Rollers





# Other Features

There are a number of types of features that we can factor into the final designs.

## Doubles





# Other Features

There are a number of types of features that we can factor into the final designs.

## Roller combination features



# Other Features

There are a number of types of features that we can factor into the final designs.

## S corners



# FAQ

## **When will the facility be built?**

Construction is planned for 2021 with the facility opening in the spring time.

## **Will I have to pay to use it?**

No, the facility will be free to use.

## **Will there be car parking?**

Car parking is available <100m from the site at Link Road Car Park, but we would encourage users to cycle/skate/scoot where possible!





# Feedback

We would welcome your feedback on the design options outlined in this presentation to help us develop a final design for us to build in Spring 2021.

To provide feedback please complete the online survey at <https://www.surveymonkey.co.uk/r/M53F9PM> by **22<sup>nd</sup> July 2020**.



# Thank You

Thank you for taking the time to contribute to the project. If you would like to be kept informed of future developments on the project, please see <https://www.bishopsstortfordtc.gov.uk/castle-park-project> or email [tracey.gaynor@bishopsstortfordtc.gov.uk](mailto:tracey.gaynor@bishopsstortfordtc.gov.uk) to join the mailing list.

You can also keep up to date with our work on social media on

Facebook: @Velosolutions UK

Instagram: @velosolutions\_uk

